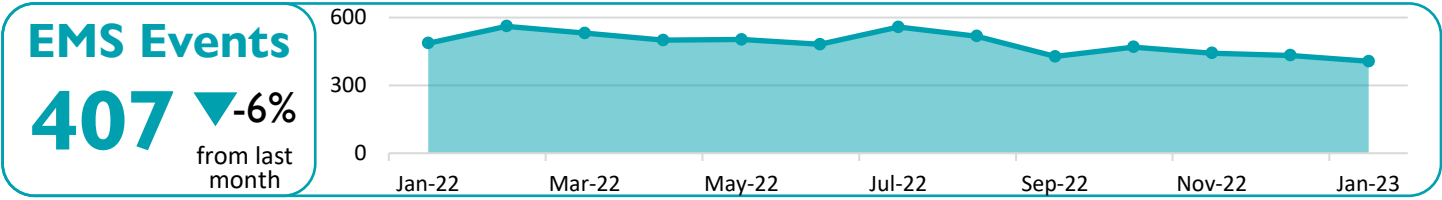


What is syndromic surveillance (SS)? Syndromic surveillance is a public health system for detecting and monitoring health events. Overdose data is reported by emergency departments (EDs) through Early Notification of Community-Based Epidemics (ESSENCE-FL) and by emergency medical services (EMS) through Biospatial. All overdoses in this report are considered *suspected* until thoroughly reviewed. Data is provisional, subject to change, and may not represent the true burden of overdose in the county.



Map Key

Change from Last Month

▼ Decreased

▲ Increased

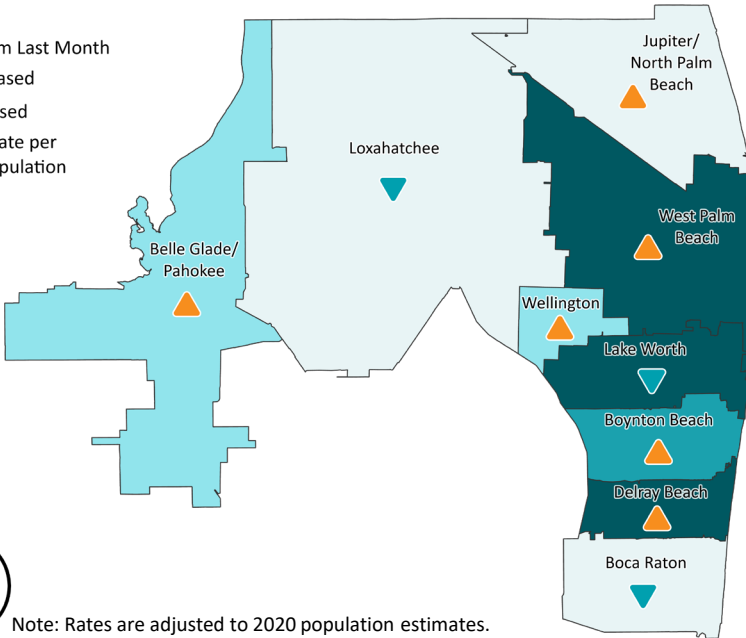
OD Event Rate per 100,000 Population

≤16

17-23

24-30

31-38

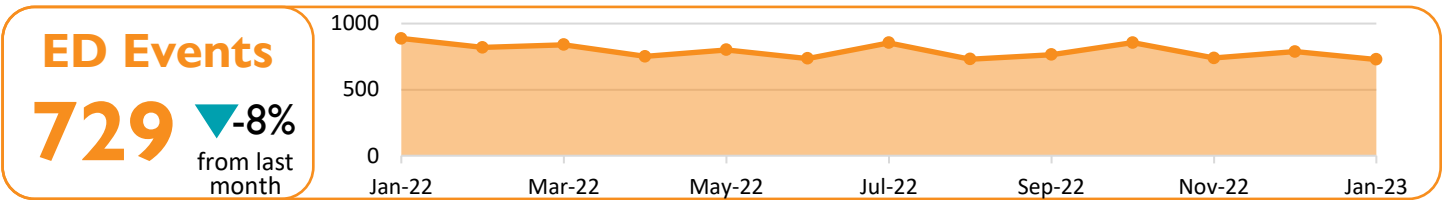


EMS Overdose Events

- Events listed are for all substances
- Wellington had the largest increase from the prior month, up to 180%.
- Lake Worth had the highest rate, at 37.8 per 100,000 population.



Note: Rates are adjusted to 2020 population estimates.

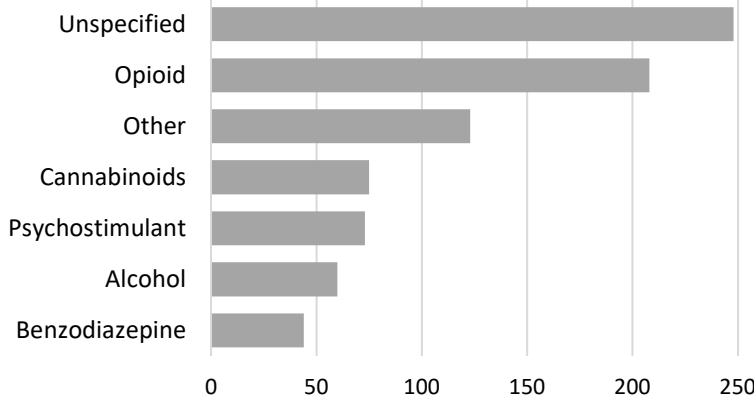


Peak Day:
Saturday

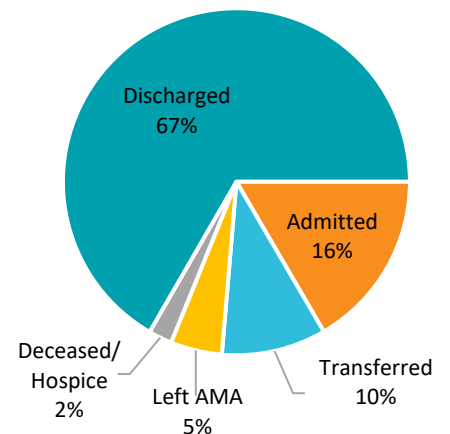


Peak Hours:
8-10pm

Suspected Substance



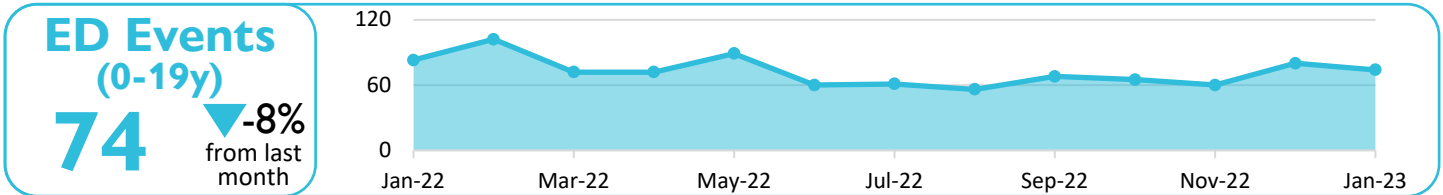
ED Visit Outcome



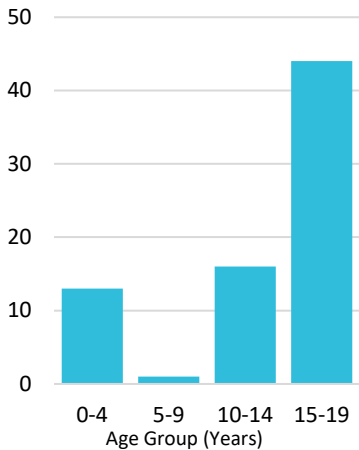
Note: Suspected substances chart does not account for multiple substances (polysubstance). AMA: Against Medical Advice



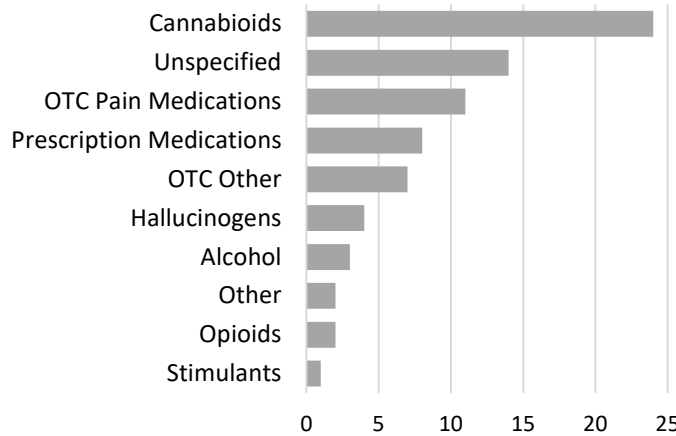
Overdoses among children and teens aged 0-19 years. Overdose data is reported by EDs in Palm Beach County. All overdoses in this report are considered *suspected* until thoroughly reviewed. Data is provisional, subject to change, and may not represent the true burden of overdose in the county.



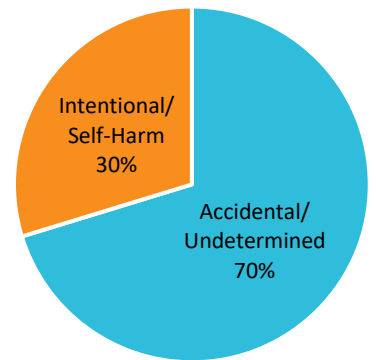
ED Visits by Age Group



Suspected Substance



Suspected Intention



Note: Suspected substances chart does not account for multiple substances (polysubstance).

MONTHLY HIGHLIGHT

Florida Department of Health in Palm Beach County Offers Free Naloxone

What you need to know:

- Florida Department of Health in Palm Beach County now provides free lifesaving naloxone at these [locations](#)
- Naloxone is a medication that reverses the effects of an opioid overdose and restoring breathing
- Naloxone can easily be administered by anyone before emergency medical assistance becomes available, but it is not intended to substitute for professional medical care
- Eligibility: 18 years or older and at risk of overdose or potential witness to overdose

