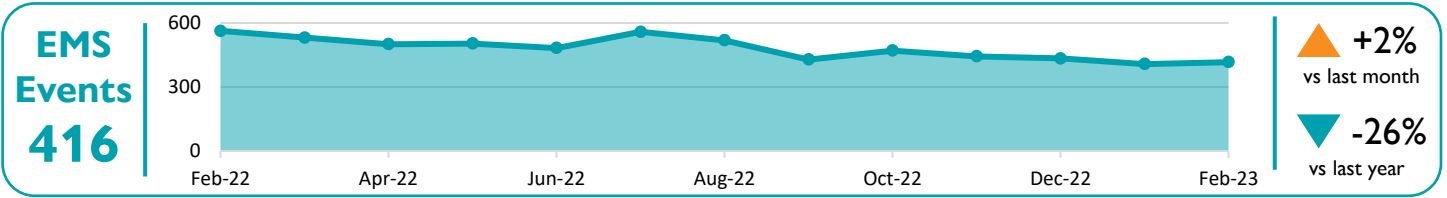


What is syndromic surveillance (SS)? Syndromic surveillance is a public health system for detecting and monitoring health events. Overdose data is reported by emergency departments (EDs) through Early Notification of Community-Based Epidemics (ESSENCE-FL) and by emergency medical services (EMS) through Biospatial. All overdoses in this report are considered *suspected* until thoroughly reviewed. Data is provisional, subject to change, and may not represent the true burden of overdose in the county.



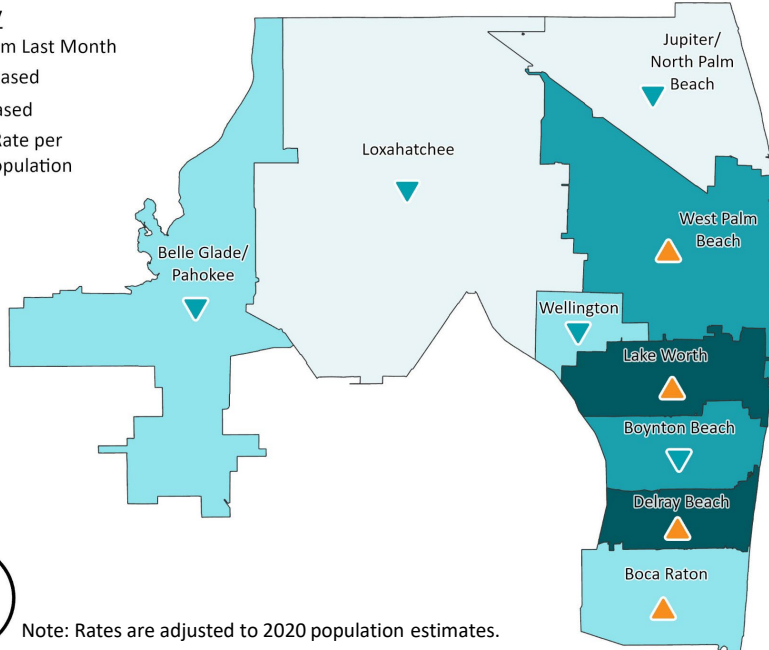
Map Key

Change from Last Month

- Decreased
- Increased

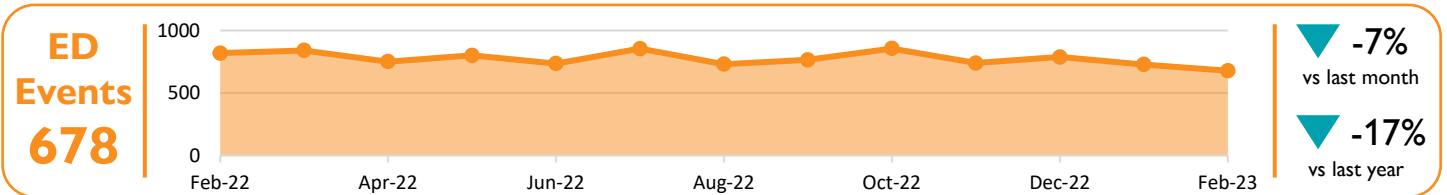
OD Event Rate per 100,000 Population

- ≤11
- ≤17
- ≤35
- ≤44



EMS Overdose Events

- Events listed are for all substances
- Boca Raton had the largest increase from the prior month, up to 26%.
- Delray Beach had the highest rate, at 43.7 per 100,000 population.

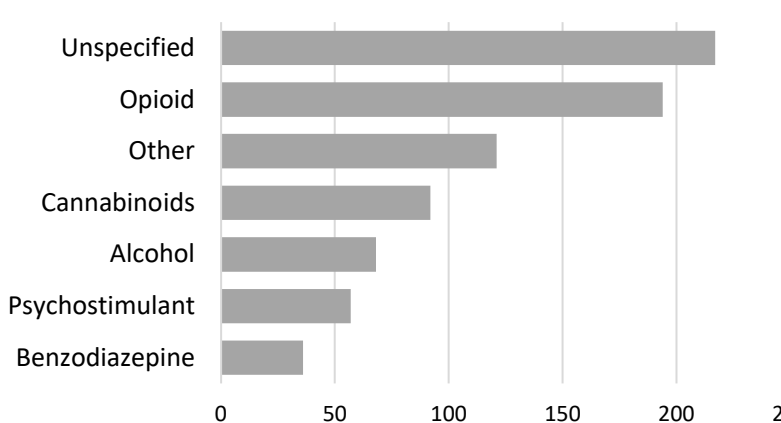


Peak Day:
Sunday

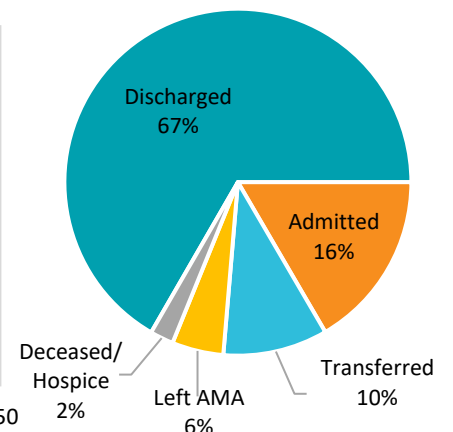


Peak Hours:
7-9pm

Suspected Substance



ED Visit Outcome

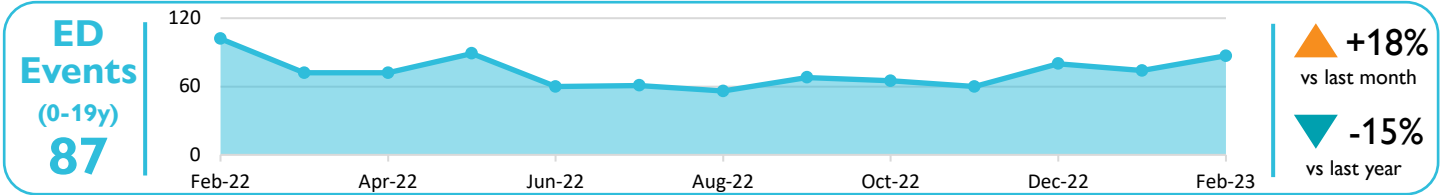


Note: Suspected substances chart does not account for multiple substances (polysubstance). AMA: Against Medical Advice

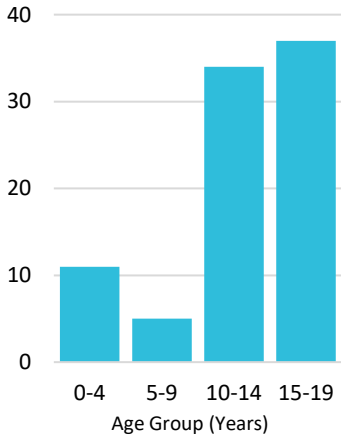
Resources and information at [OvercomeOverdosePBC](https://www.overcomeoverdosepbc.com) or scan QR code →



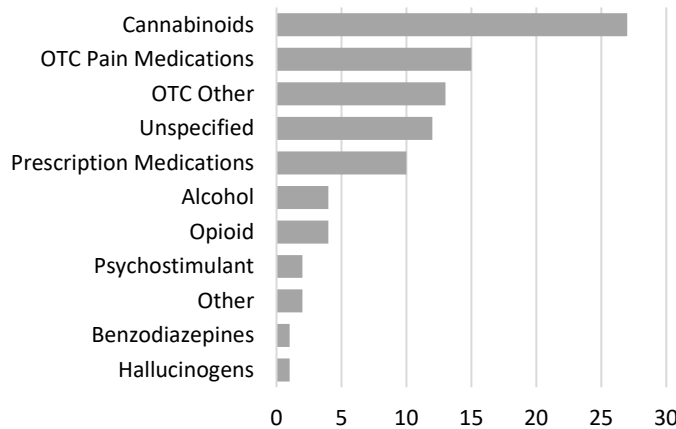
Overdoses among children and teens aged 0-19 years. Overdose data is reported by EDs in Palm Beach County. All overdoses in this report are considered *suspected* until thoroughly reviewed. Data is provisional, subject to change, and may not represent the true burden of overdose in the county.



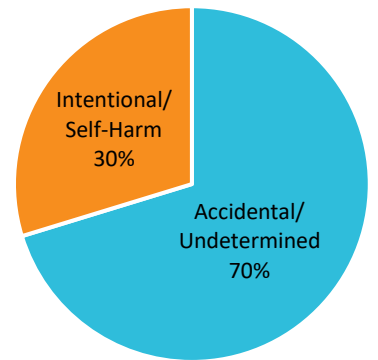
ED Visits by Age Group



Suspected Substance



Suspected Intention



Note: Suspected substances chart does not account for multiple substances (polysubstance).

MONTHLY HIGHLIGHT

Percent Change in the Number of All-Drug Overdose-Related Emergency Department Visits in 2022 compared to 2021

